

# ***LF-01***

## ***PRODUCT CERTIFICATION MATRIX***



**NORTH AMERICAN LAMINATE  
FLOORING ASSOCIATION**

**NALFA Standards Publication LF-01**

**An American National Standard (ANSI)**

*Published by*

North American Laminate Flooring Association

The North American Laminate Flooring Association, all rights reserved. The [attached/aforementioned] document is the property of "NALFA"; it represents the consensus efforts of that Organization and its membership; which is comprised of manufacturers, distributors, materials providers, and ancillary entities. NALFA bears no responsibility and disclaims all liability for information/material contained in the Document which may subsequently be changed.

**[www.nalfa.com](http://www.nalfa.com) | 413-264-5352**

1350 Main St. Suite 1100 | Springfield, MA, 01103



## LF-01 Product Certification Matrix

Thank you for your interest in the NALFA LF-01 and Surface Swell certifications. The LF-01 standard establishes a structured, tiered model of minimum performance requirements for laminate flooring, based on standardized test methods.

To facilitate efficient certification across multiple products, NALFA provides a certification matrix designed to minimize redundant testing and streamline the evaluation process for manufacturers.

Upon successful completion of LF-01 testing, manufacturers may proceed with the optional Surface Swell certification. A dedicated matrix is included to guide this next phase, offering a clear and systematic approach to achieving full product certification in accordance with NALFA standards.

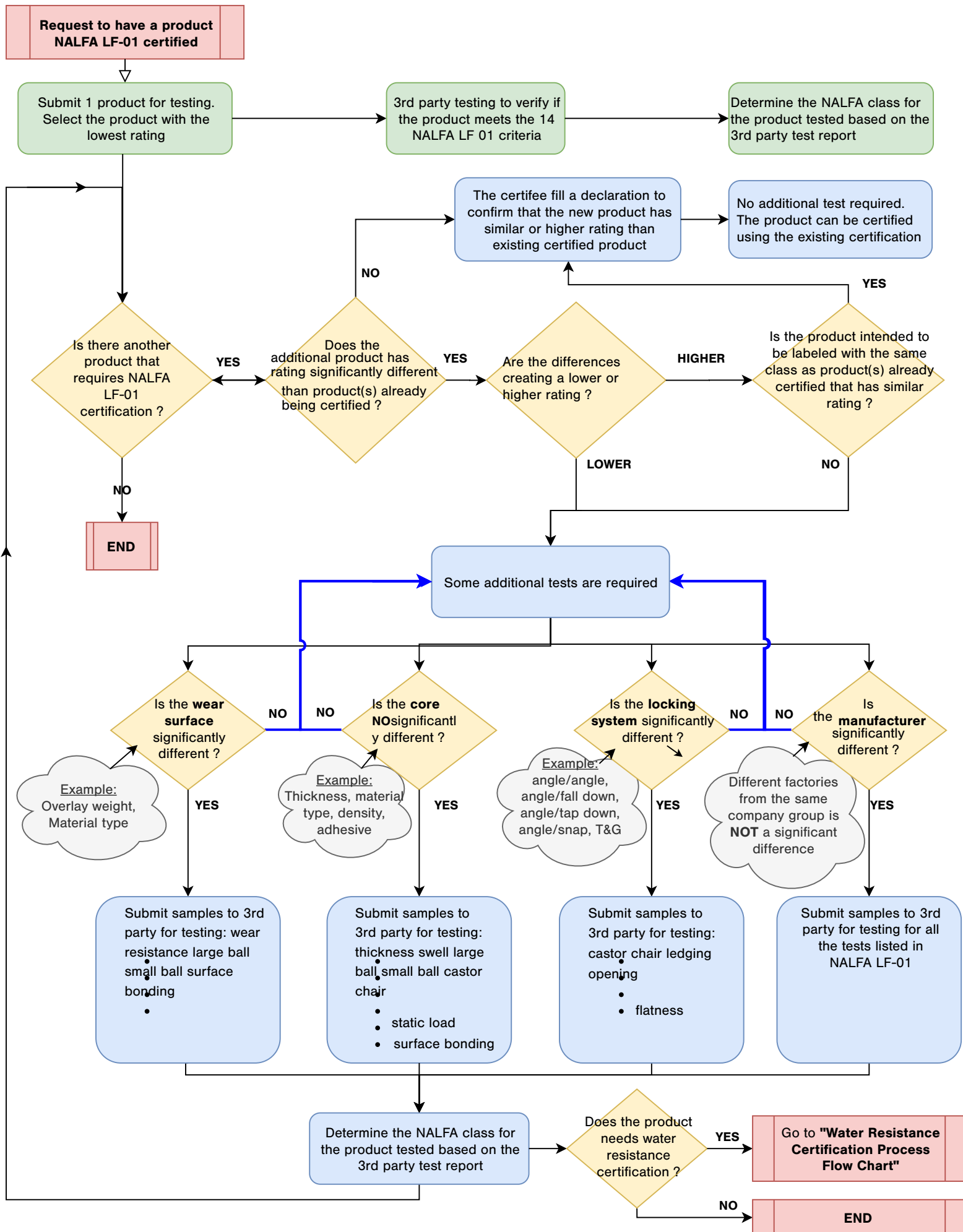
Below you can find the performance criteria for the NALFA Surface Swell test method.

NALFA Surface Swell Criteria		
Value	Units	Minimum Performance
<i>Recovered Qualitative Rating</i>	1-5	$\leq 2$
<i>Measured Recovered Average</i>	mm	$\leq 0.3$
*Minimum performance values only based on points 2-4 (P2-4)		

\*3rd party results as per ISO 4760 are acceptable as equivalent to the NALFA Surface Swell- Assembled Joint test method.

Please contact [admin@nalfa.com](mailto:admin@nalfa.com) for any questions or concerns.

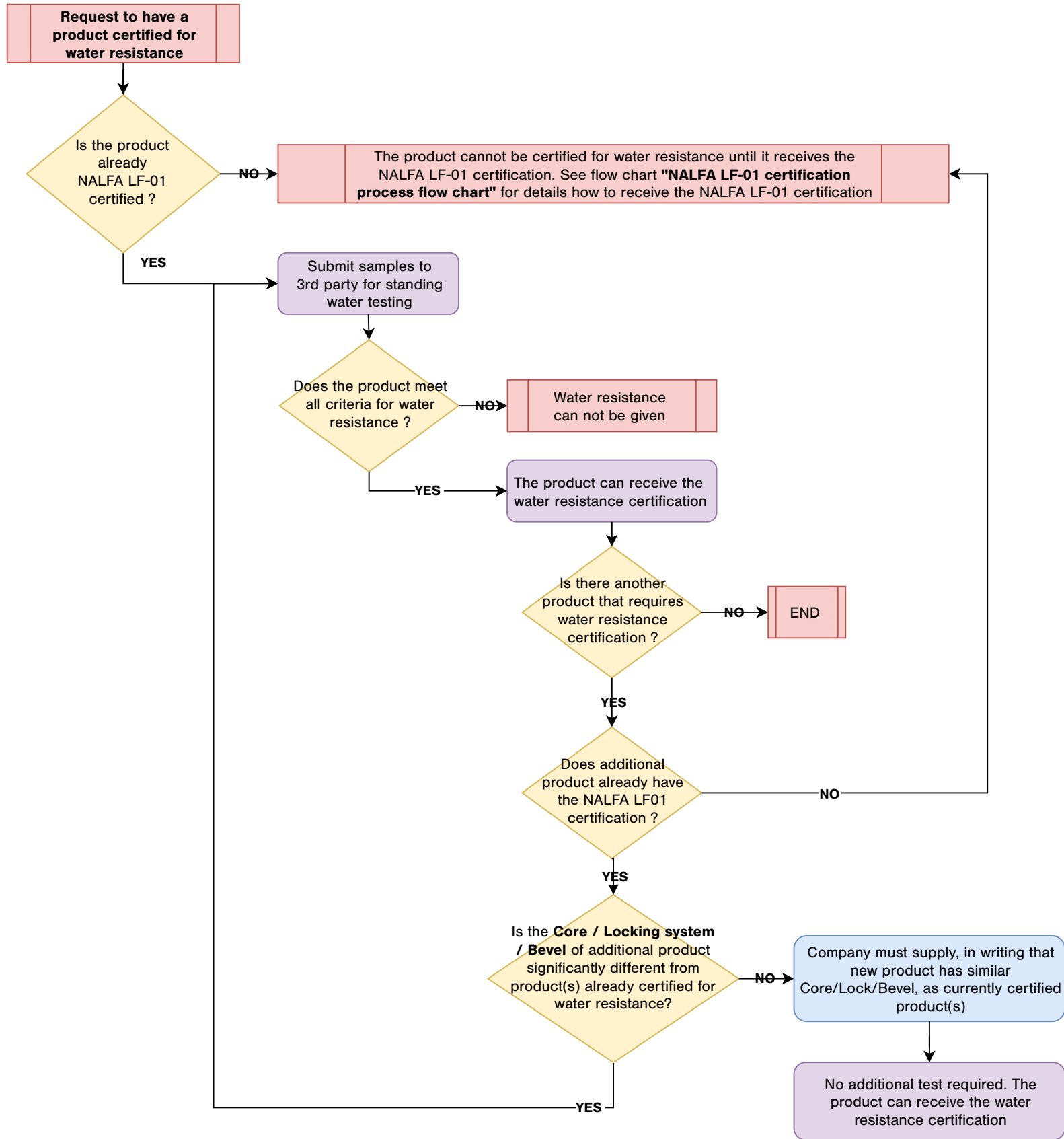
# LF-01 CERTIFICATION PROCESS FLOW CHART



## Definition:

- **Class of use:** Residential, Light commercial, Commercial, Heavy commercial
- **Lowest rating:** for example: lowest wear resistance, thinnest product, lowest water resistance, lowest density, ....
- **Significant:** it is the responsibility of the certifier to define what is considered a significant change.

# WATER RESISTANCE CERTIFICATION PROCESS FLOW CHART



## Level of difference expected to potentially test:

- **Core:** nominal thickness difference, density,
- **Locking system:** angle/angle, angle/fold down, angle/tap down, angle/snap, T&G
- **Bevel:** square edge, V groove bevel, Pillow bevel